

Report Number: 13090589

Nanjing Guhua MetalWork Co Ltd
Xiongzhou Industrial Park
Luhe District
Nanjing, ChinaOrder Number : GH0618
Date of Issue: 23/09/2013
Test Date : 28/03/2013
to 28/03/2013

This report details the results of tests carried out on Putlog Coupler Drop Forged Zinc Plated used for connecting steel tubes of 48.3mm outside diameter and of at least 3.2mm nominal wall thickness at a minimum in the construction of working scaffolds and falsework required for the construction, maintenance, repair and demolition of buildings and structures.

Description and Marks on couplings

Putlog Coupler Drop Forged Zinc Plated

Marks : BS1139:2009/GH 0613 L

Basis of Tests

The couplings have been tested in accordance with the relevant sections and requirements of BS 1139-2.2:2009.

Information supplied by the customer

Manufactured by: Nanjing Guhua MetalWork Co Ltd
Shape: To Drawings shown at the end of this report
Dimensions: To Drawings shown at the end of this report
Mass: To Drawings shown at the end of this report
Material Characteristics: To Drawings shown at the end of this report
Surface Protection: Zinc Plated

RESULTS

Design

The design of the coupling complied with the requirements of the relevant items in section 4 of the standard.

Dimensions and Material Characteristics

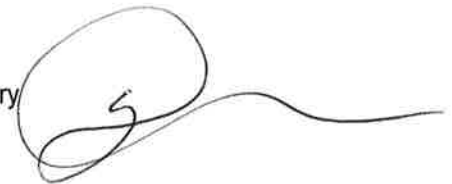
The measured dimensions of the coupler matched the stated dimensions given by the customer (see Drawings). Mass and material characteristics, of the couplings, were all within the tolerances as specified by the manufacturer. (Drawings are shown at the end of this report)

Marking

The markings satisfy the requirements laid out in section 15.

Results of all tests performed are detailed on the following pages.

Authorised Signatory
Lee Mangham
Operations Manager



Report Number: 13090589

Slipping Force Tests of Putlog Couplers, tested in accordance with Clause A.2

Tested using 3.2mm steel tube (RT _{S1})	
Test Number	Pmax (kN)
1	1.54
2	1.35
3	1.23
4	1.97
5	1.25

Requirements from EN 74-1 table 8 for Putlog Couplers:
Minimum SWL = 0.63kN

F _{S5%}	0.72
------------------	------

From the results, the prototype is Accepted for slipping force

Photograph of Setup for Slipping Force



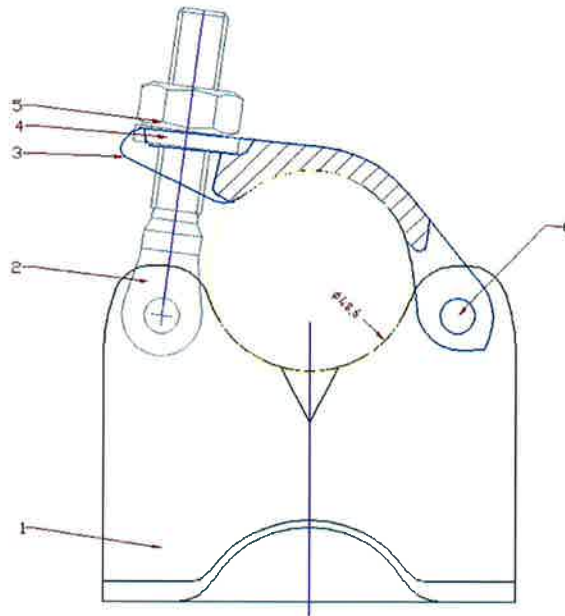
This picture shows the setup for slip test on single couplers but is not necessarily the coupler under test.

L



Report Number: 13090589

Drawings



REMARKS :

- 1. Antitorque moment: 45N.m ~ 55N.m
- 2. Weight: 650±50g
- 3. Finishing: ZINC plated

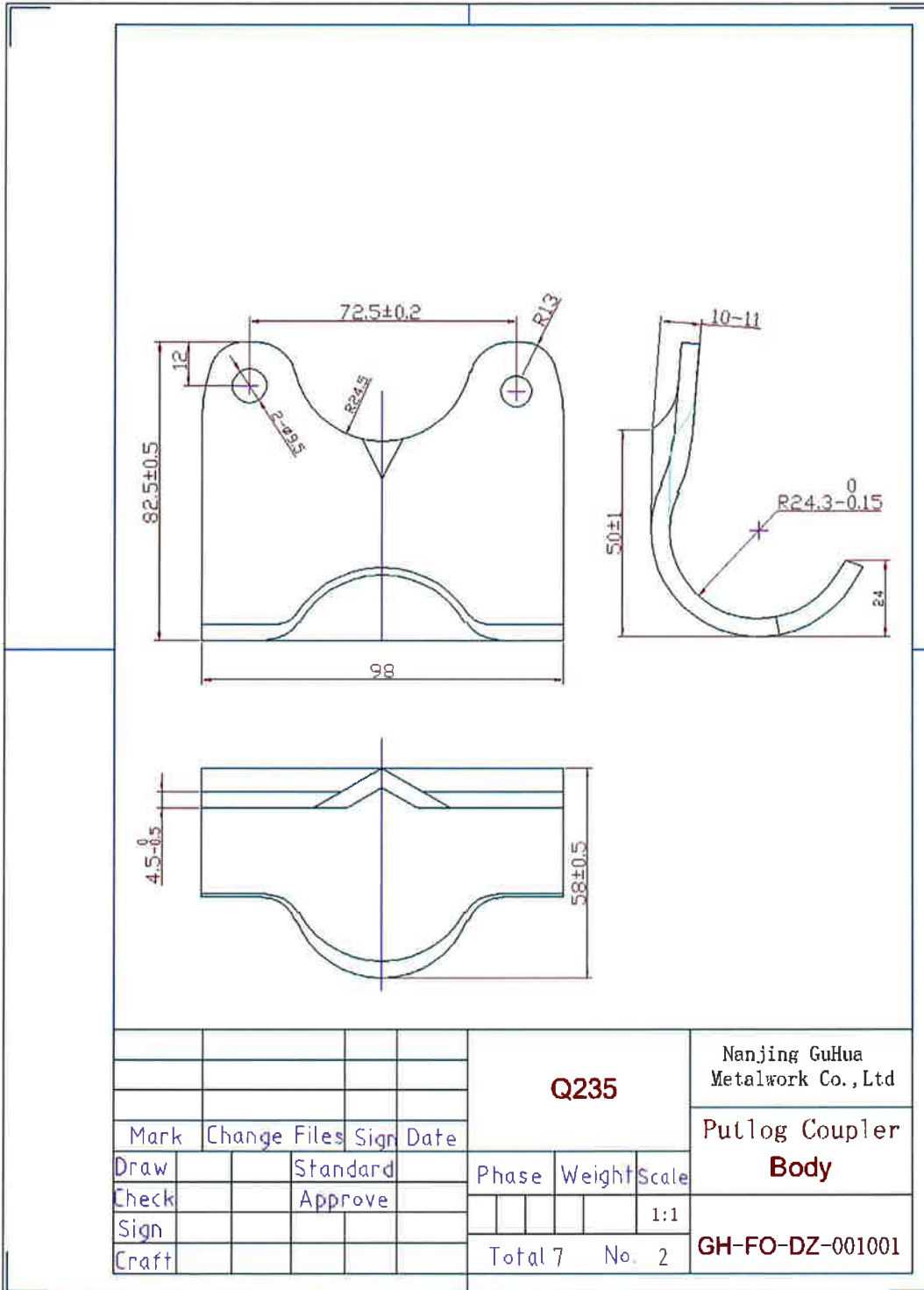
6	RIVER	2	ML08L	GH-FO-DZ-001006	
5	NUT	1	Q235	GH-FO-DZ-001005	
4	WASHER	1		GH-FO-DZ-001004	
3	Drop Forge Flap	1	Q235	GH-FO-DZ-001003	
2	BOLT	1	35K	GH-FO-DZ-001002	
1	Putlog Coupler Body	1	Q235	GH-FO-DZ-001001	
No.	Name	Quantity	Material	Draw No.	Remarks

				Nanjing GuHua Metalwork Co., Ltd	
				Drop-Forged Putlog Coupler	
Mark	Change Files	Sign	Date	Phase	Weight
Draw		Standard			Scale
Check		Approve			1:1
Sign					
Craft				Total 7	No. 1
				GH-FO-DZ-001	

L



Report Number: 13090589

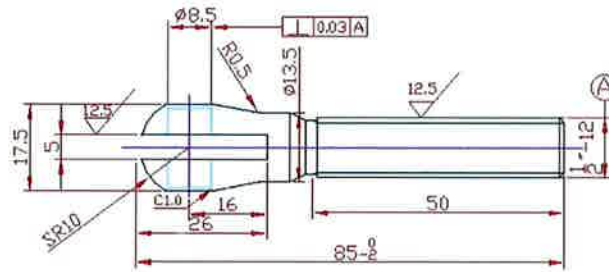


L



Report Number: 13090589

else ∇ 12.5



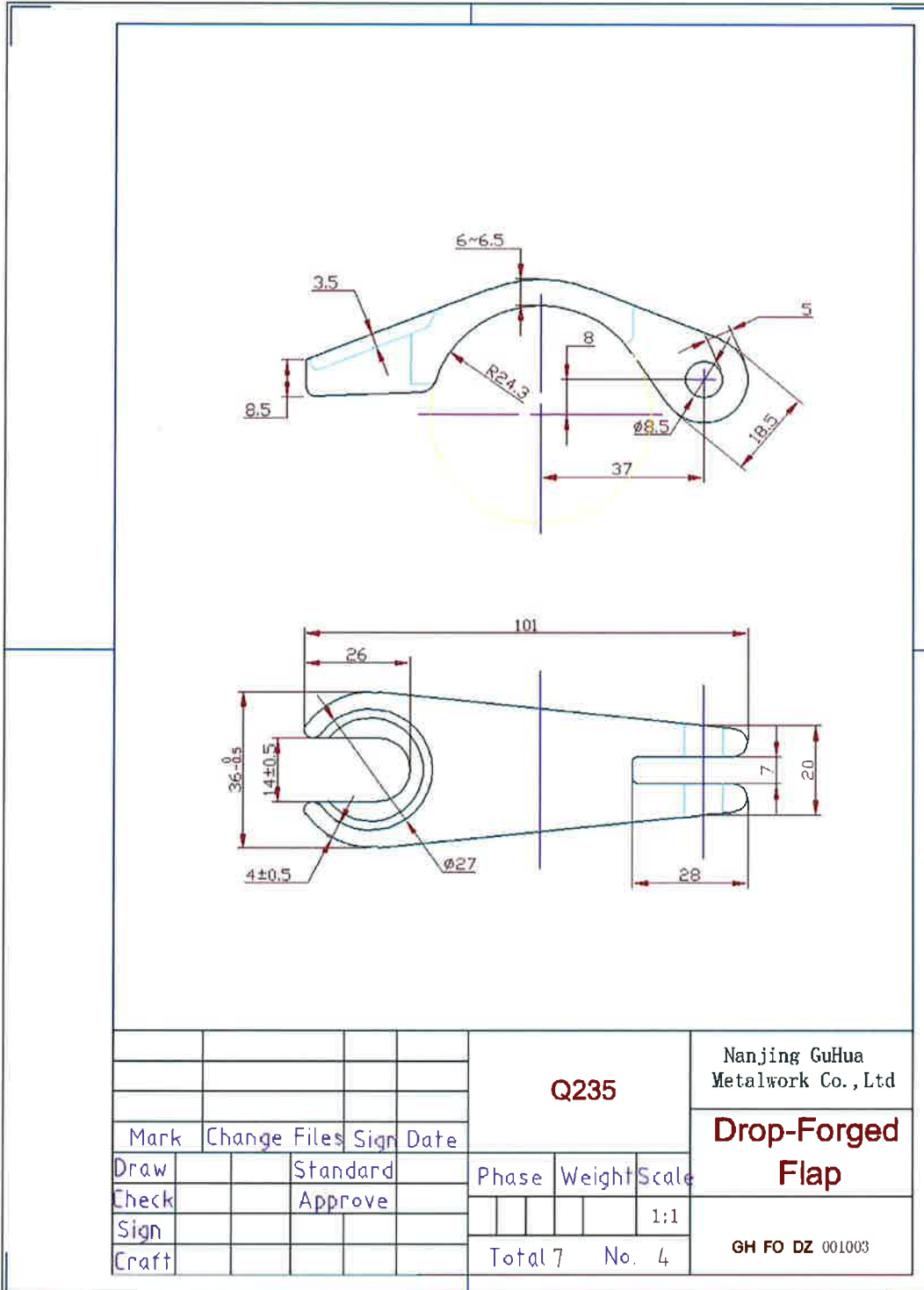
REMARKS :

1. Not allowed any quench crack and rusty on the surface
2. Dimension of forge crack must less than \varnothing 36mm
3. Bolt grade: 6.8
4. Antitorque moment must over 98N.m

				35K			Nanjing GuHua Metalwork Co., Ltd	
							BOLT	
Mark	Change Files	Sign	Date	Phase	Weight	Scale	GH-FO-DZ-001002	
Draw		Standard				1:1		
Check		Approve						
Sign								
Craft				Total 7	No. 3			

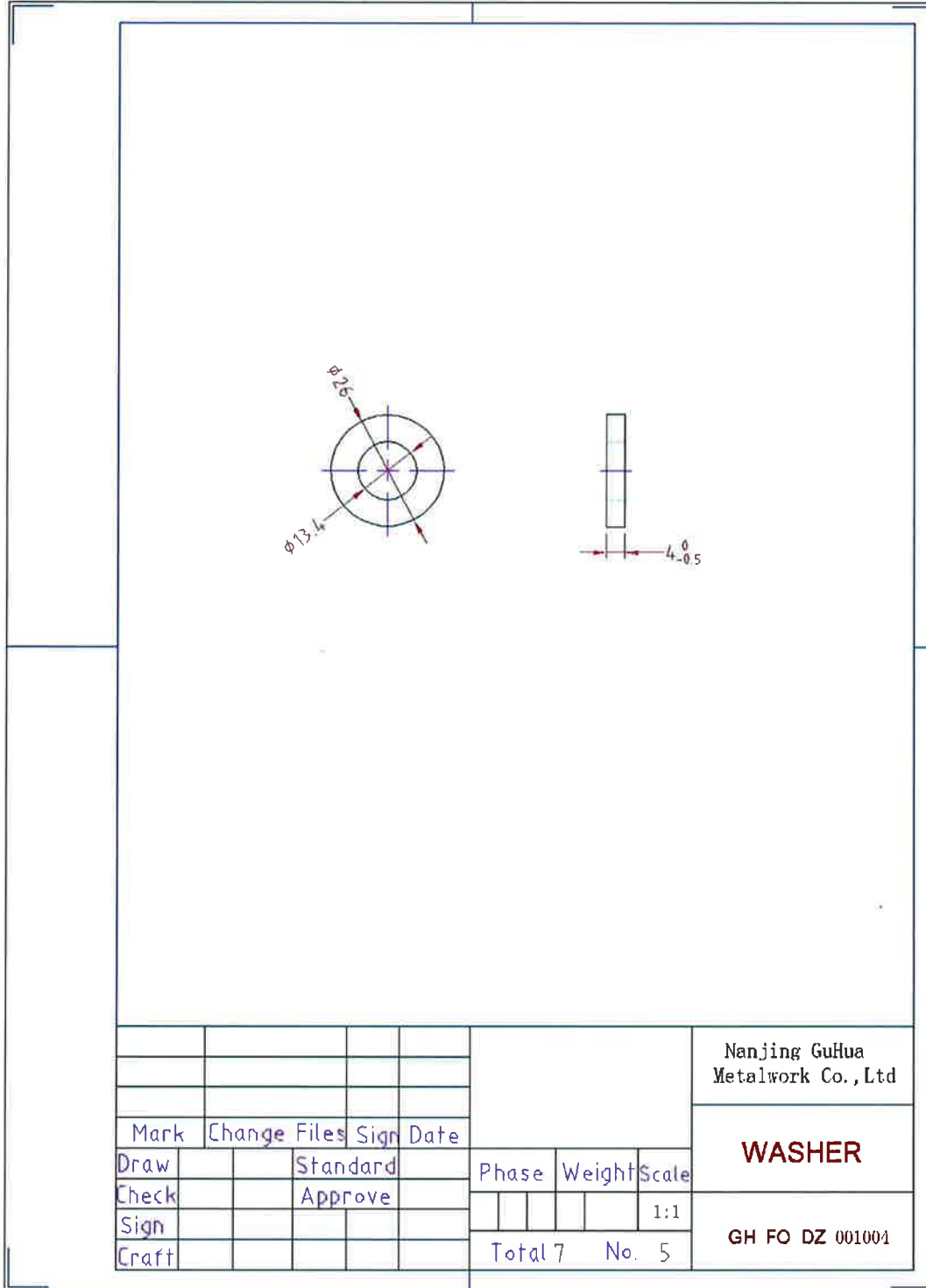
Ln

Report Number: 13090589



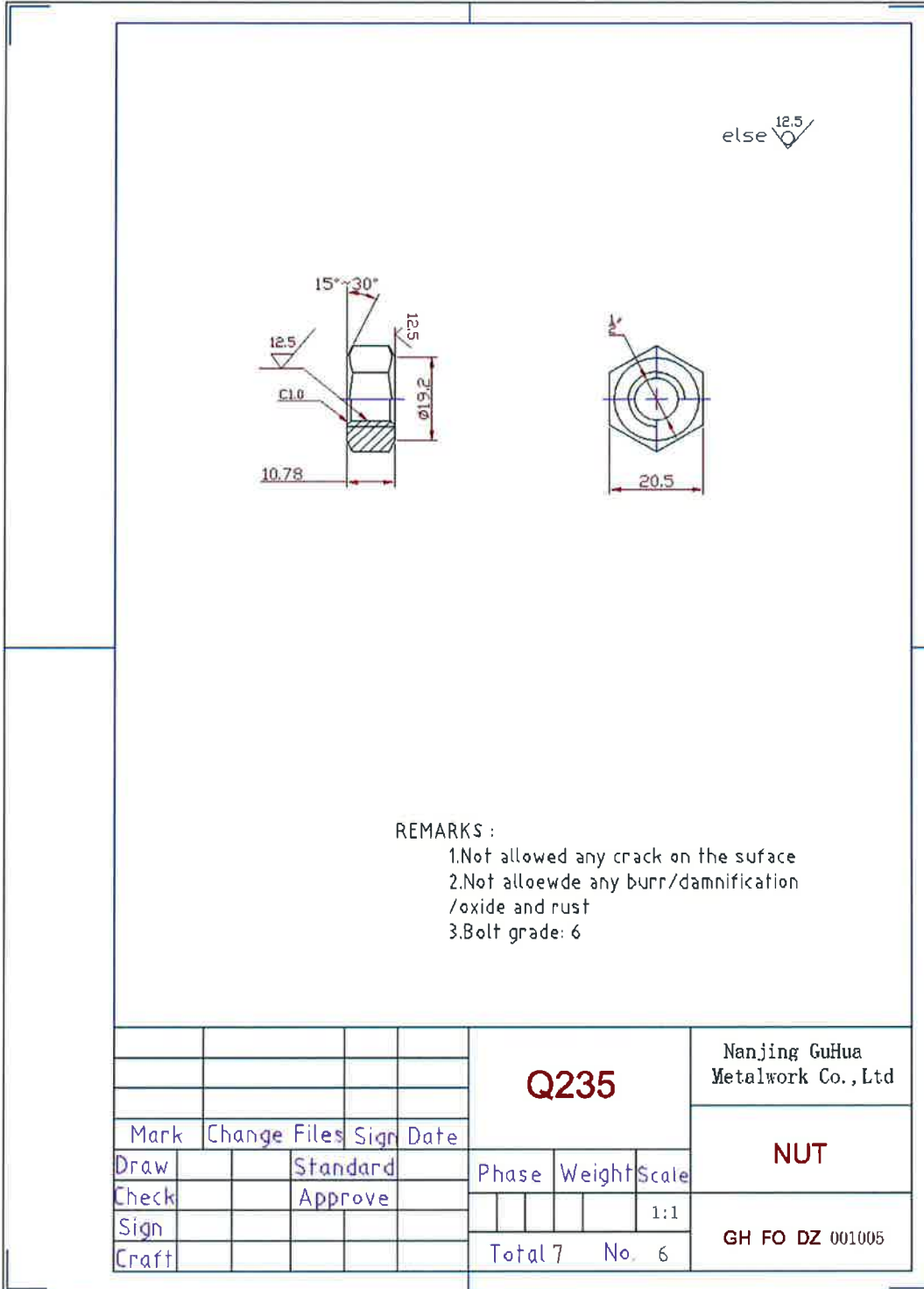
Ln

Report Number: 13090589

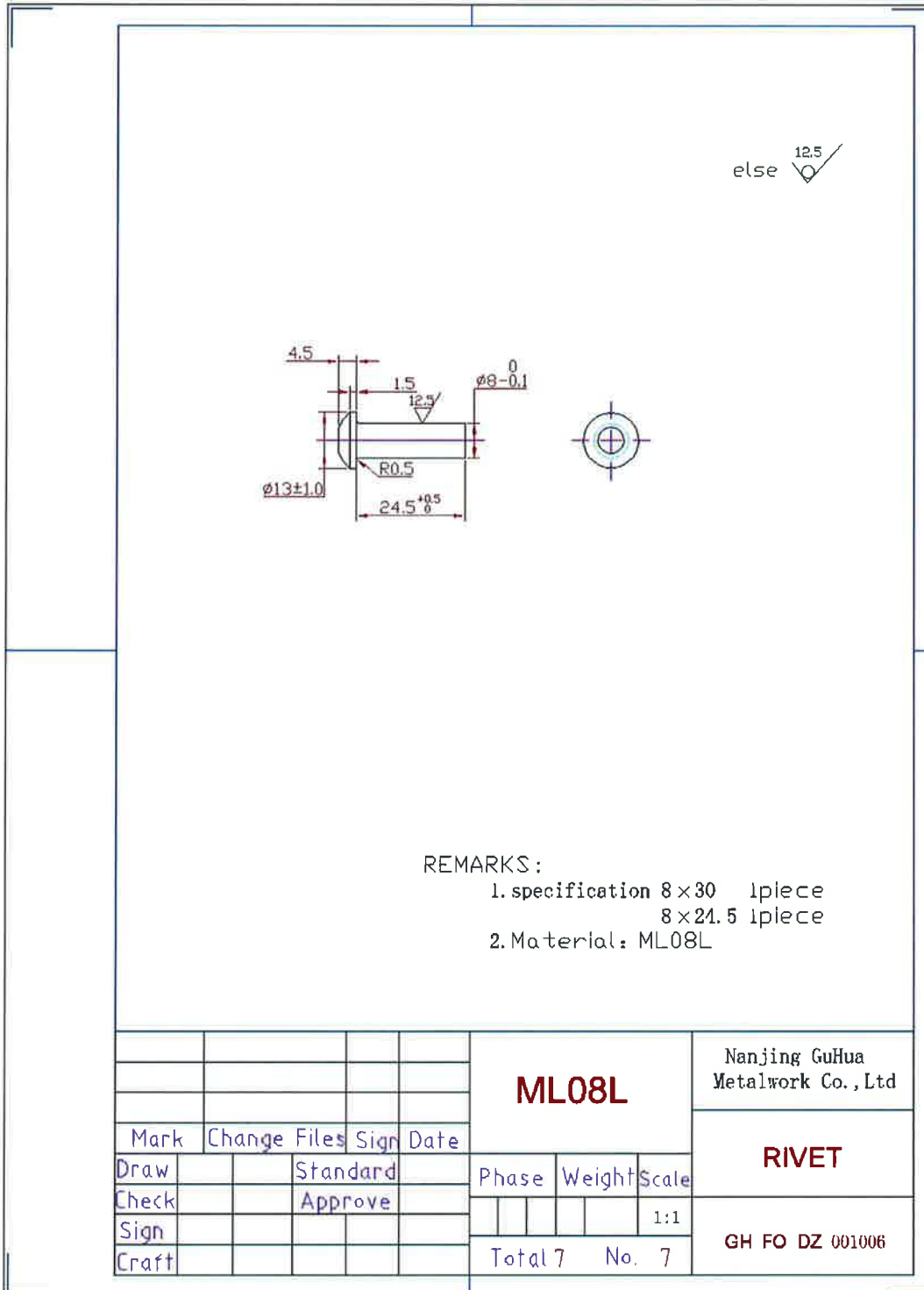


Lu

Report Number: 13090589




Report Number: 13090589



Lu

Report Number: 13090589

Photograph of Coupler**End of Report***L*